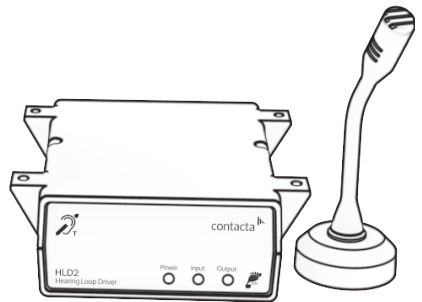


Above the Counter Loop System

IL-K300



Installation & User Guide

July 2024

Contents

Product Overview	3
Components	4
Required Tools	4
Installation Instructions	5
HLD2 Driver Overview	7
Handy Tips	8
Using the System	9
Maintenance	10
Troubleshooting	11

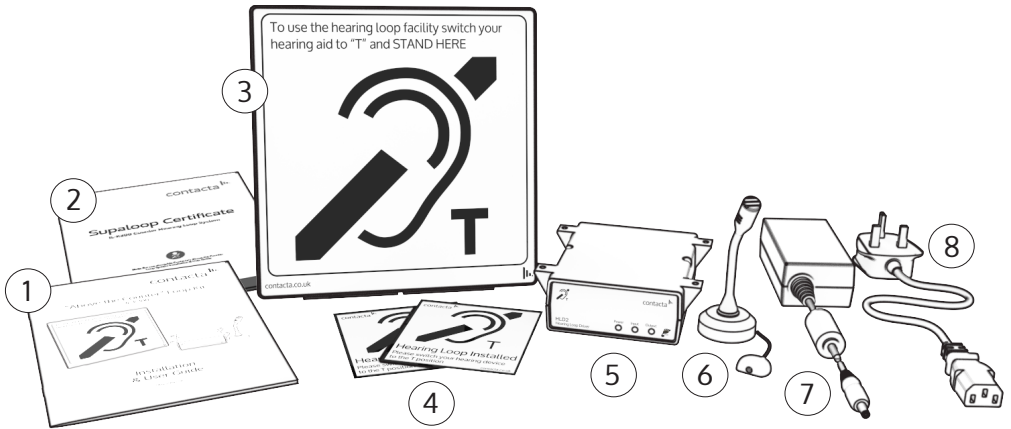
Product Overview

Our Above the Counter Loop System provides clear communication with hearing device wearers, especially where background noise is a problem or clear speech is restricted.

The hearing loop aerial has been combined with a sign to create the Supaloop Aerial. This is fixed to a counter or desk surface, enabling your customers to easily spot the loop and get maximum benefit.

The unit can be fitted into many positions due to its low profile structure.

Components



1. Installation and User Guide
2. Supaloop Aerial Certificate
3. Supaloop Aerial (IL-AE97-00)
4. Hearing Loop Stickers x 2
5. Hearing Loop Driver (HLD2)
6. Halo Microphone (STS-M72) **or** Mouse Microphone (STS-M70)
7. Power Supply (PS-55-01)
8. IEC Lead (IEC-LEAD-2M)

Required Tools

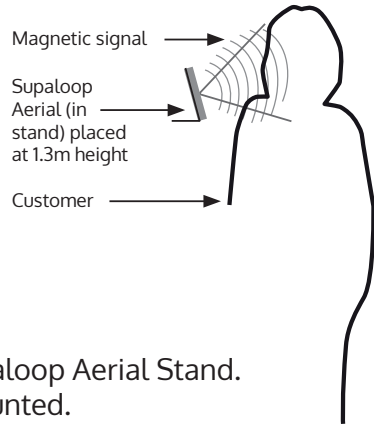
- Field Strength Meter (IL-CONTACTA-FSM)
- Test Signal Generator (TSG1)
- Attenuator Cable (IL-ATTEN-CABLE)
- Adjuster (IL-AE97-ADJUSTE)
- Loop Listener (IL-RX20)
- Cable tacker
- 2.5mm flat head screwdriver
- Phillips PH2 screwdriver (or equivalent)
- Wire cutters/strippers
- Battery drill
- Assorted drill bits
- Zip ties
- Electrical insulation tape

Installation Instructions

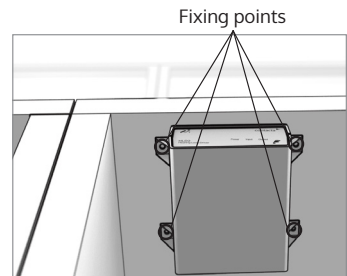
We recommend that installation is carried out by a qualified engineer, adhering to relevant standards.

1. Check the contents of the system's box to familiarise yourself with the components.
2. Determine the ideal position for the Supaloop Aerial (mounting the unit on a pole if required):

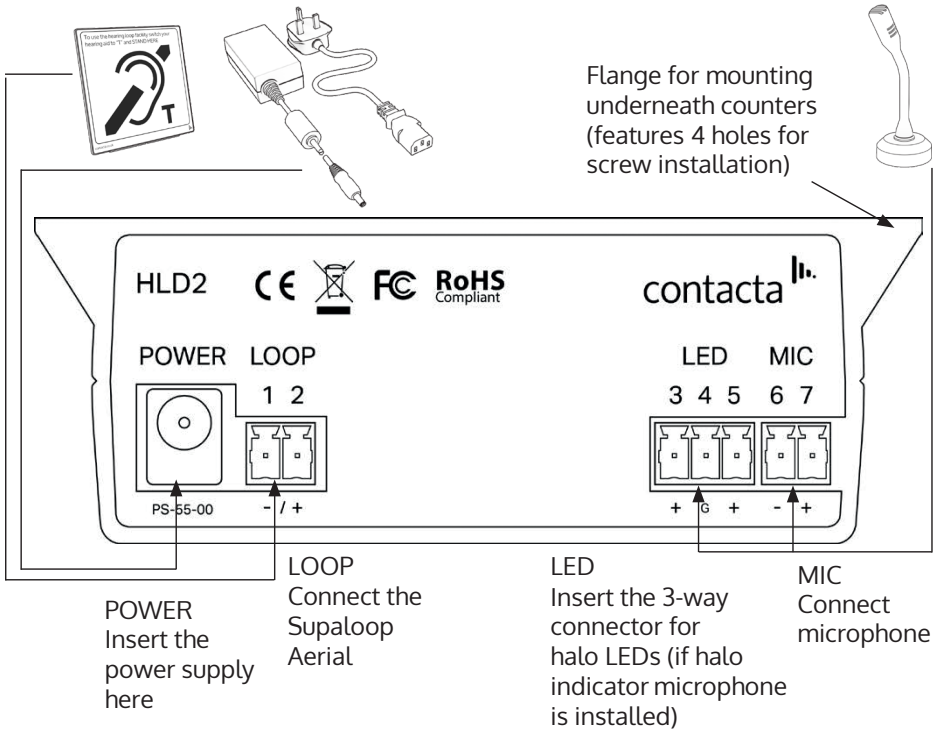
- The unit must be placed prominently to ensure users with a hearing device are aware a loop is available.
- The unit is ideally within 300mm of anticipated users.
- The **bottom edge** of the unit ideally installed between the following heights:
 - ⌘ 1.1m to 1.3m if using the Supaloop Aerial Stand.
 - ⌘ 1.2m to 1.3m if vertically mounted.



3. Determine the ideal position for the system's other components (for example, where the hearing loop driver will be attached).
4. Place the microphone as close to the staff member as possible without causing an obstruction, and fix it to the counter using its double-sided pad.
5. Check the cable route to the hearing loop driver, especially cable length to other components and access through the counter top.
6. Place the hearing loop driver in your preferred location under the staff counter.
7. Mark the 4 fixing points for drilling.



8. Drill and fix the hearing loop driver in place using the screws provided.
9. Install the power supply close to a power socket outlet using the supplied mounting bracket and fixing screws.
10. Install the Supaloop Aerial in the position determined in step 2 using the provided double-sided pad. If using an optional Supaloop Aerial stand, attach the aerial and stand assembly with either the screws or double-sided pad provided.
11. Connect all components as per the below diagram:



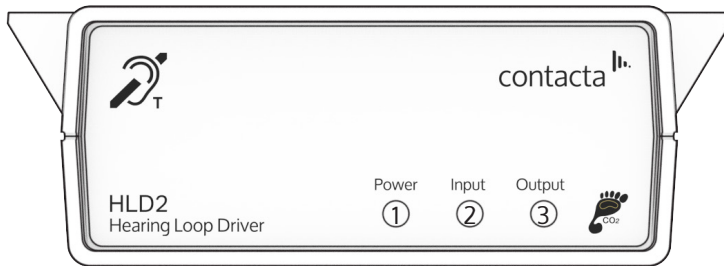
12. Route all cables neatly to the hearing loop driver using trunking or cable tacking as necessary.
13. The system is now ready to use. Volume adjustments are not required as the hearing loop driver self-adjusts.

Initial Set-Up

Once installed, volume adjustments are not required as the driver self-adjusts; the system is ready to operate. Please ensure you test the loop using one of our loop listeners.

The Loop Driver

The driver has no buttons on the front panel. Please see below an overview of the indicators on the front panel of the HLD2 driver.



Firmware revision is indicated by the number of blinks on all LEDs after power-on. From revision four onwards, the Input LED and microphone halo indicator (if installed) no longer blink during activity. In all revisions, the halo LED is solid green if both the microphone and loop are connected and working, and solid red if either is faulty or disconnected.

Firmware revision four or newer:

1. Power LED:

Solid green when correctly powered.

Flashes green once every 25 seconds when in "Power Save" mode.

Solid red when incorrect power supply connected.

2. Input LED:

Solid green when microphone is operating correctly.

Solid red if microphone is faulty or no input detected.

No indication for activity.

3. Output LED:

Solid green when loop output is functioning correctly.
Solid red when loop is faulty/disconnected.

Older than firmware revision four:

1. Power LED:

Solid green when correctly powered.
Flashes green once every 25 seconds when in "Power Save" mode.
Solid red when incorrect power supply connected.

2. Input LED:

Flashes green when microphone is operating correctly.
Solid red if microphone is faulty or no input detected.

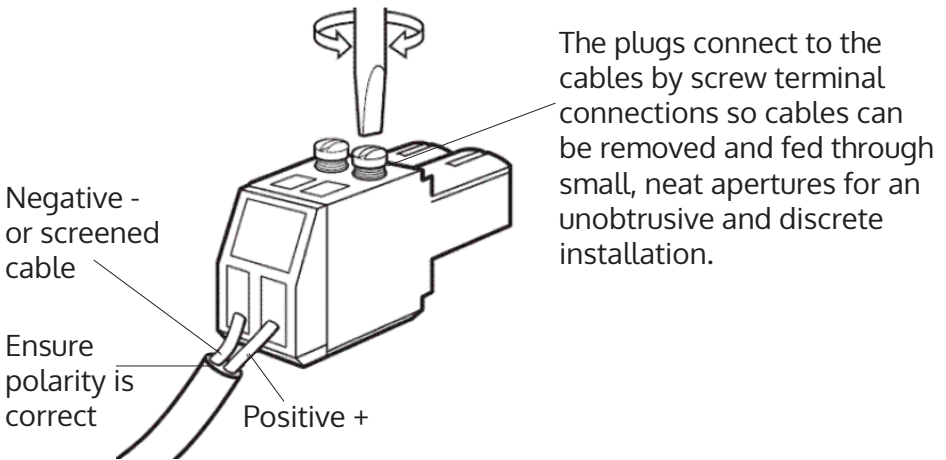
3. Output:

Flashes green when loop output is functioning correctly.
Solid red when loop is faulty or disconnected.

Handy Tips

Removing Green Connectors

Each component comes fitted with two-way and three-way connection plugs located in the appropriate sockets at the rear of the driver. If wires require to pass through small apertures, the connection plugs may be removed temporarily.



The cables and plugs must be re-connected correctly or the system will not operate. If in doubt, mark the wires before disconnecting the plug(s).

If there is a suitable cable port on the cashier's side, the cables can be diverted through this without the need to remove and reconnect the two-way plugs.

Using the System

- Face the microphone and speak normally from your seated/ standing position
- The speech is converted to an alternating magnetic field and transmitted via the loop aerial
- This is picked up by the telecoil in the customer's hearing device and converted back to speech

There's nothing more you need to do!

If the hearing device wearer doesn't pick up the signal:

- Draw their attention to the loop sign, checking their device is in the "T" position
- Ask the hearing device wearer to check the volume setting on their device
- Try moving closer to the microphone to achieve clearer voice pick-up
- Ask the hearing device wearer to move close to the loop sign

Maintenance

To prolong the life of the product, the following procedures should be carried out on a regular basis, keeping the system at its optimal performance:

- Ensure all connectors are firmly inserted into their sockets on a regular basis
- Do not stretch the microphone cable
- Clean the hearing loop driver and the microphone with a dry soft cloth/cleansing wipes. Do not use solvent based cleaners
- Do not allow cleaning fluids to enter the amplifier or back ports/vents of the microphone
- Regularly check that any loop listeners used to check the system are working correctly

Troubleshooting

Symptom	Possible Fault	Action
No power detected through amplifier	1) Power jack not plugged in or faulty 2) Plug fuse has blown 3) Faulty power supply unit 4) Faulty amplifier	1) Check power jack is firmly plugged in 2) Put the unit to one side and seek further advice 3) Change the power supply unit 4) Contact your local dealer
POWER LED illuminated red	1) Faulty or incorrect power supply connected	1) Ensure the correct power supply is connected (PS-55-00) 2) Contact your local dealer if not
INPUT LED illuminated red	1) Faulty or incorrectly connected microphone	1) Check microphone is wired correctly in green plug and connected to "MICROPHONE" socket on back of HLD2 driver
OUTPUT LED illuminated red	1) Faulty or incorrectly connected loop aerial	1) Check loop aerial is connected to "LOOP" socket on back of HLD2 driver
Red LED illuminated on microphone (if halo indicator microphone is installed)	1) Constant red LED: Microphone fault 2) Red LED comes on after speech: Hearing loop aerial fault	1) Ensure microphone is firmly plugged in 2) Check to make sure the hearing loop connector is firmly plugged in
No audio is heard through the hearing loop via a hearing aid or loop listener	1) Hearing loop disconnected 2) Microphone disconnected	1) Check above for correct connections 2) Ensure loop listener has a new set of batteries
Interference (buzzing/whistling/hissing) is heard through hearing loop	1) Unscreened or poorly earthed third party equipment is being used in close proximity 2) Incorrect power supply being used	1) Switch off any third party equipment to identify the source of interference 2) Ensure that our grounded power supply unit is being used (PS-55-00)
Unit does not go into power saving mode	1) Ambient noise in area is too high	1) Switch off any air con systems, desktop fans and or computers to reduce ambient noise

If you are still experiencing problems, please contact your local dealer.



Local dealer:

UK & ROW
+44 (0) 1732 223900
sales@contacta.co.uk

US & Canada
+1 616 392 3400
info@contactainc.com

www.contacta.co.uk